

Butterfly Grove

Kristin Stubbs

Project Description

For this project, the goal was to create a meditative space within an existing building. My idea for designing a meditative space started off with designing a some type of memorial or cemetery in honor for the deceased. That idea evolved into a butterfly sanctuary. This sanctuary is a quiet space with a walking path throughout it along with seating areas and private areas all for meditation. The majority of the sanctuary is covered with butterfly attracting plants. Although this is mostly for the butterflies, this is also to make users feel like they connected with nature during their meditative experience. My building design does include a lot of glass so, I would like the space to be located somewhere outside of the city where there are plenty of naturalistic views.

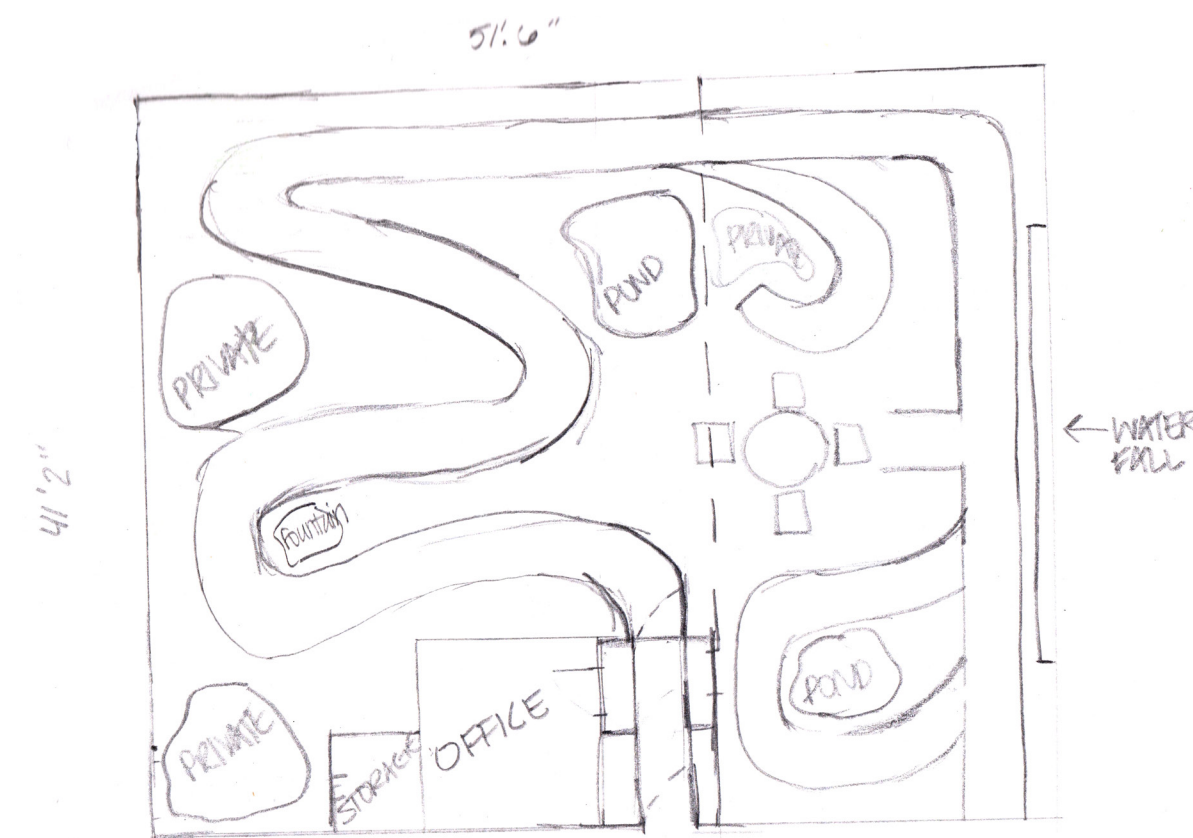
Initial Research

For my initial research on meditative spaces, I went to what I think is a relaxing space on campus here at Ohio University. It's a small pond that is surrounded by a few benches. What I like about this space is that it is kind of hidden. It's mostly surrounded by trees and it is away from the main walking paths. I find this to be a relaxing space because it had a pond, greenery, and breezy air. Another meditative space I went to was the pool at my apartment complex. I find this to be a relaxing space when it's not too crowded. I found similar relaxing aspects here as I did at the pond. A large part that I took away from this research was that these spaces have something to fixate on but, they also allow you to not think about it.

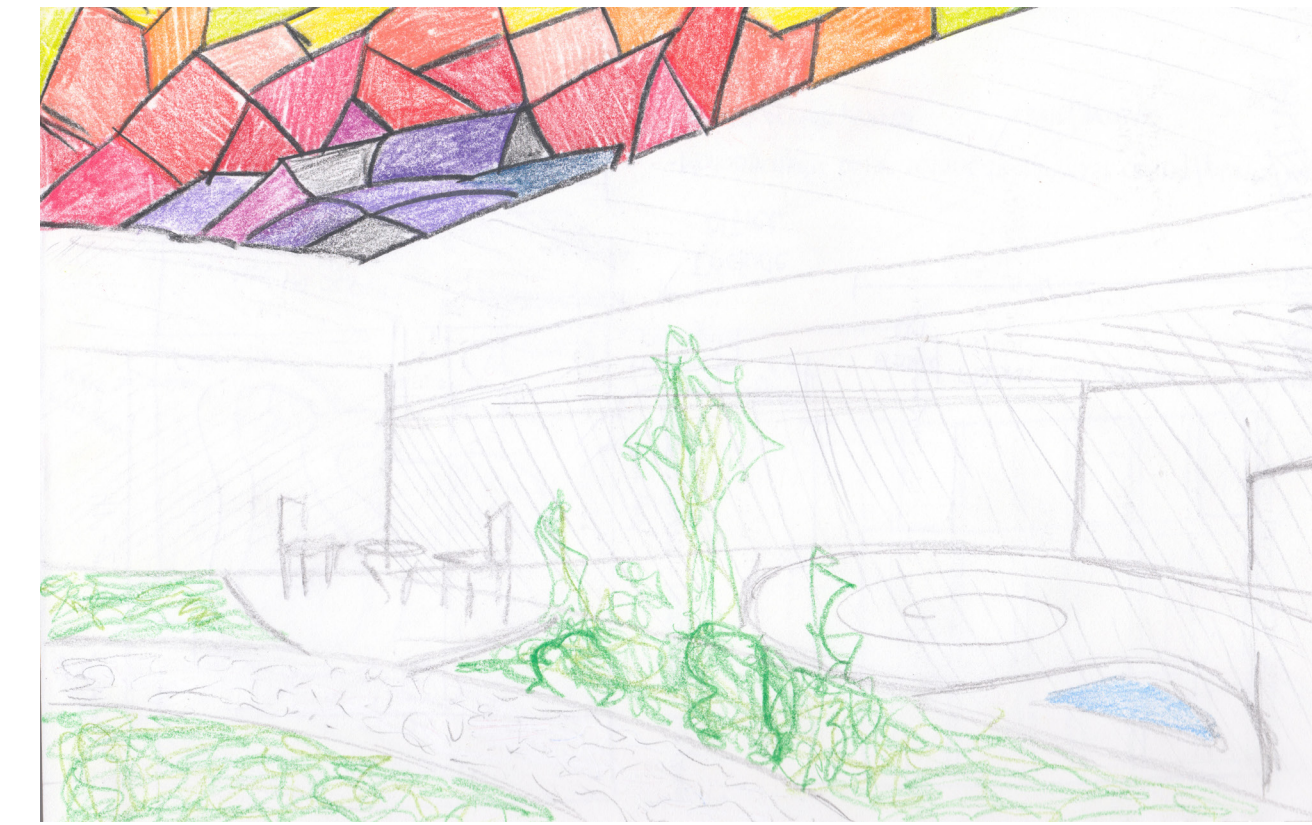


Pond on Campus at Ohio University

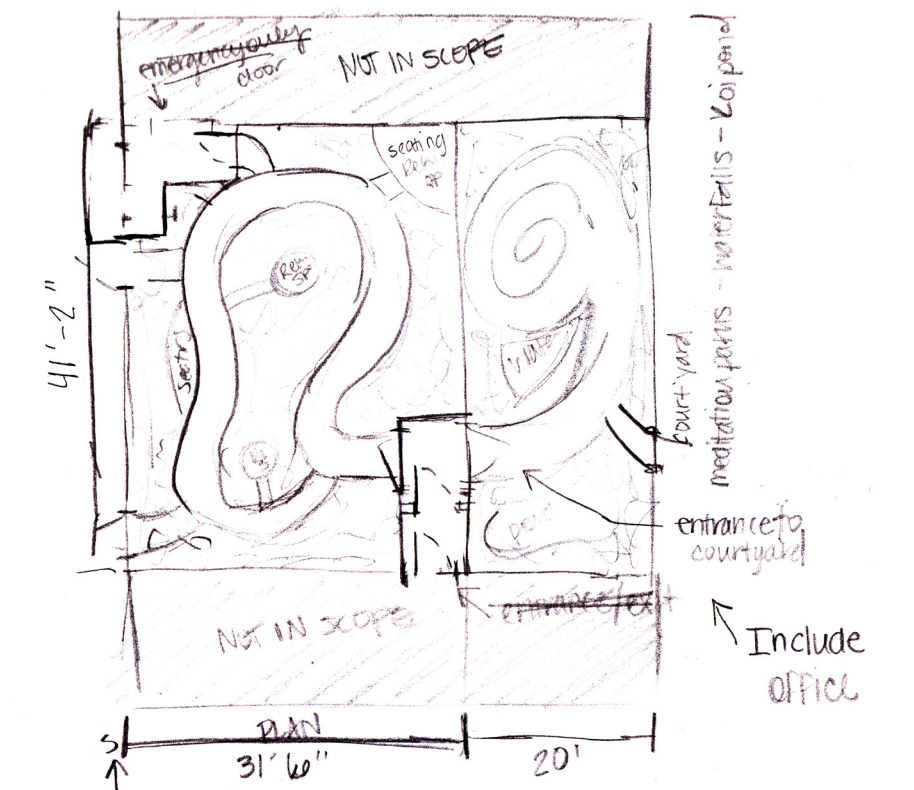
Initial Ideation



Initial Building Plan Sketch

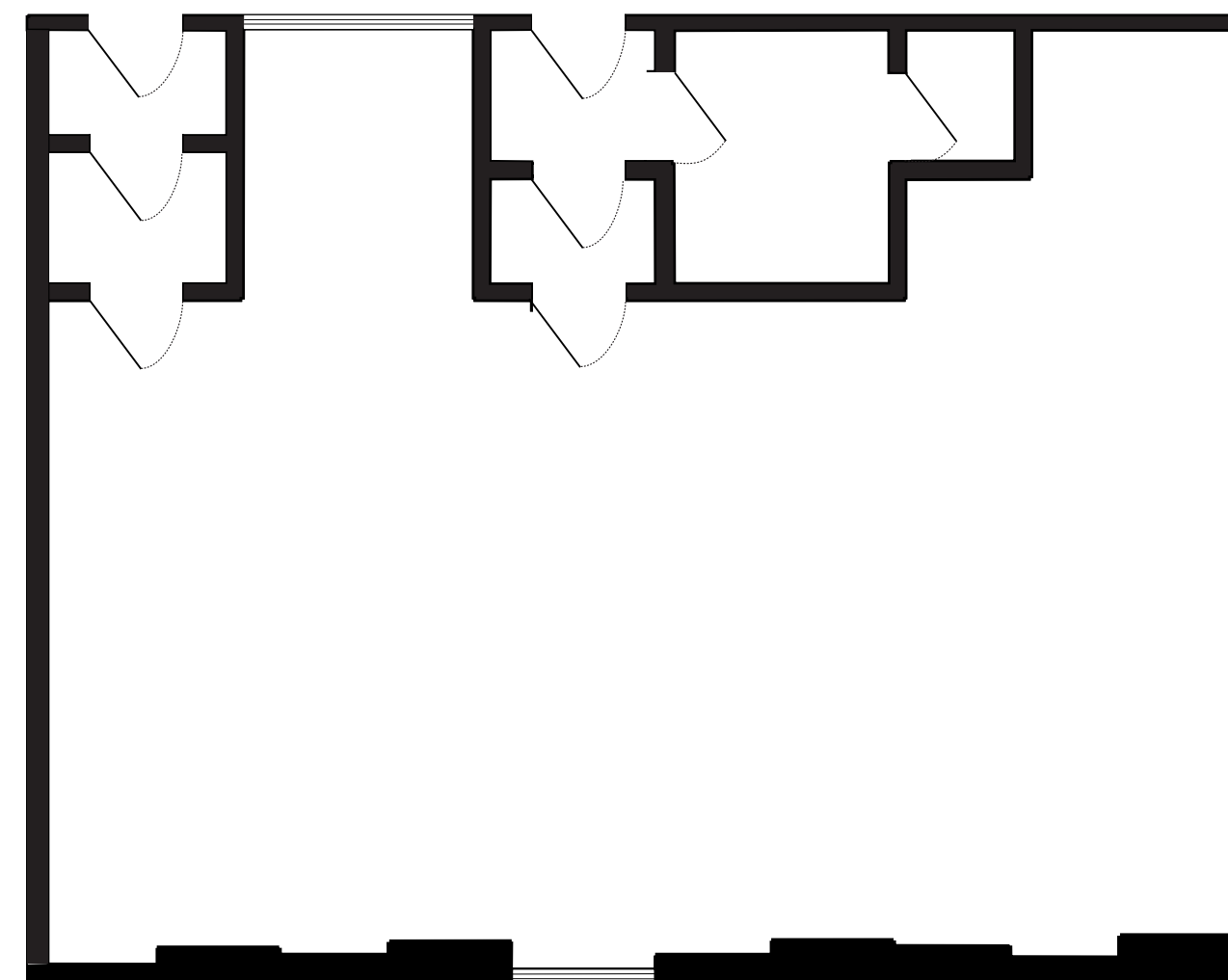


Initial Interior Sketch

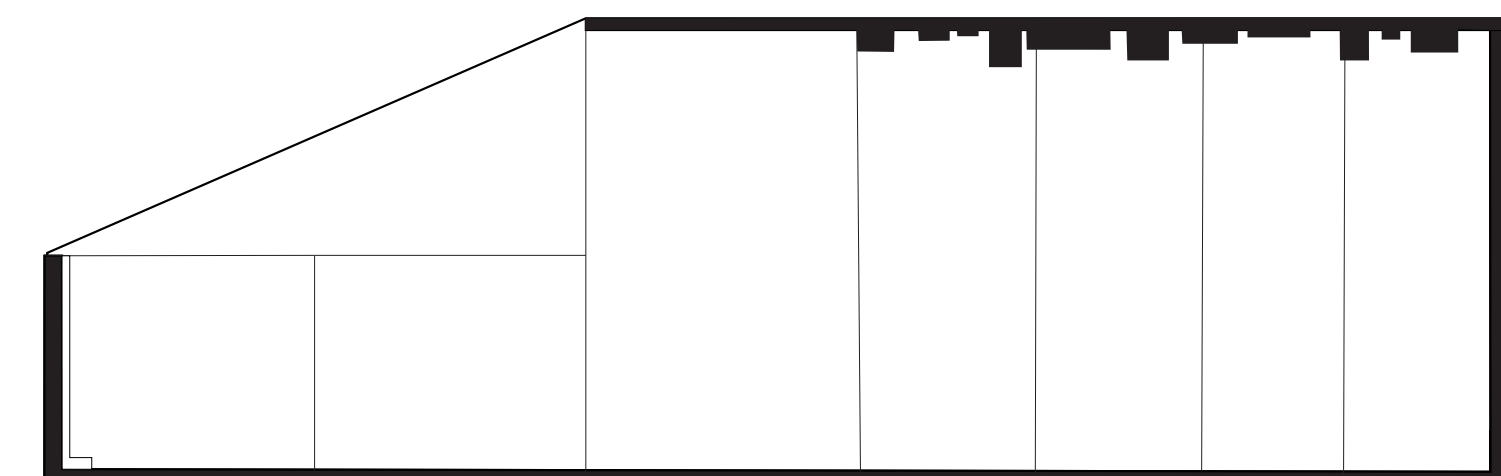


Second Building Plan Sketch

Building Plans

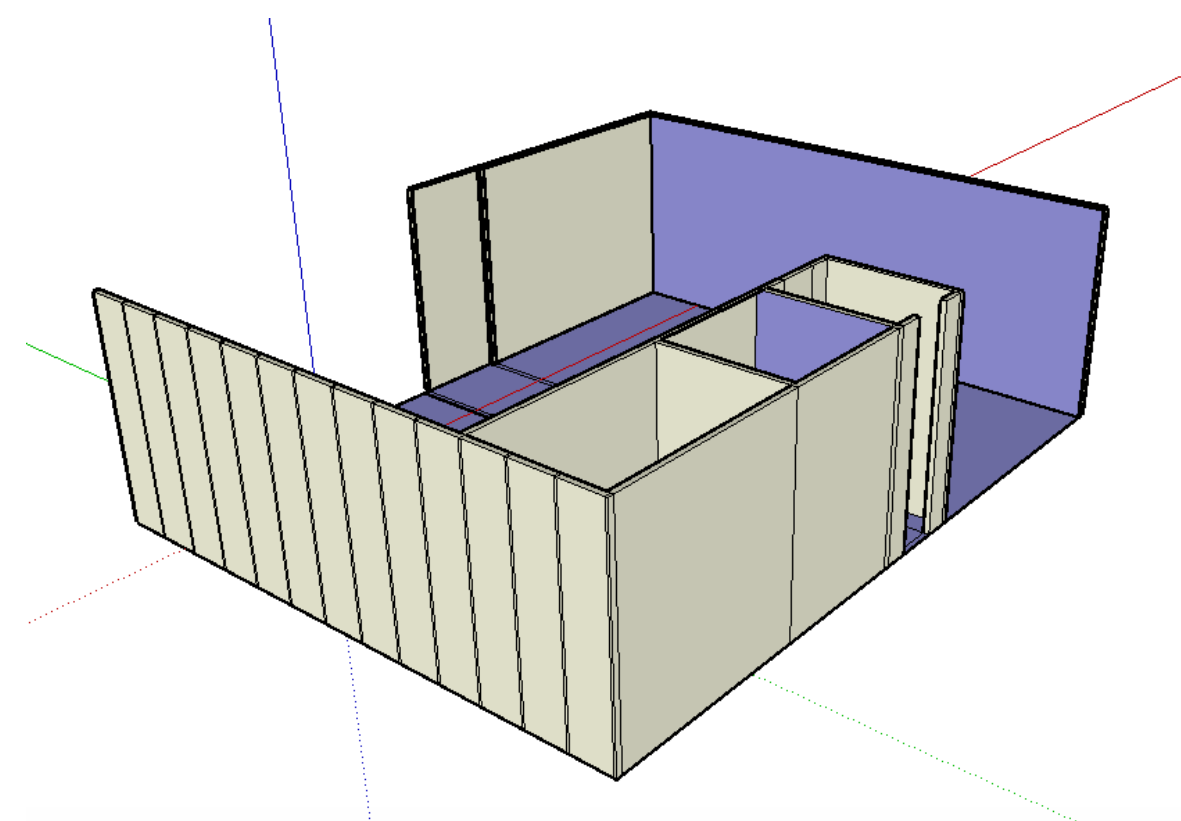


Sanctuary Plan: Drawn at 1/8" = 1'-0"

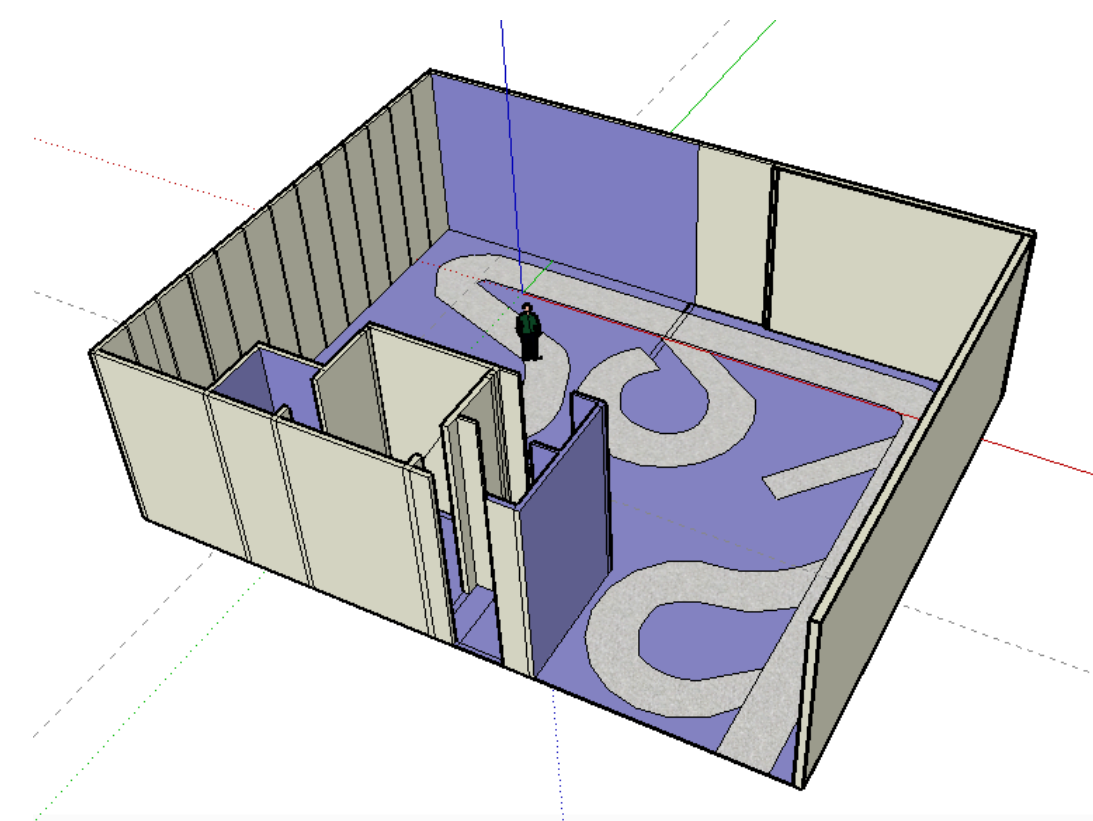


Sanctuary Section: Drawn at 1/8" = 1'-0"

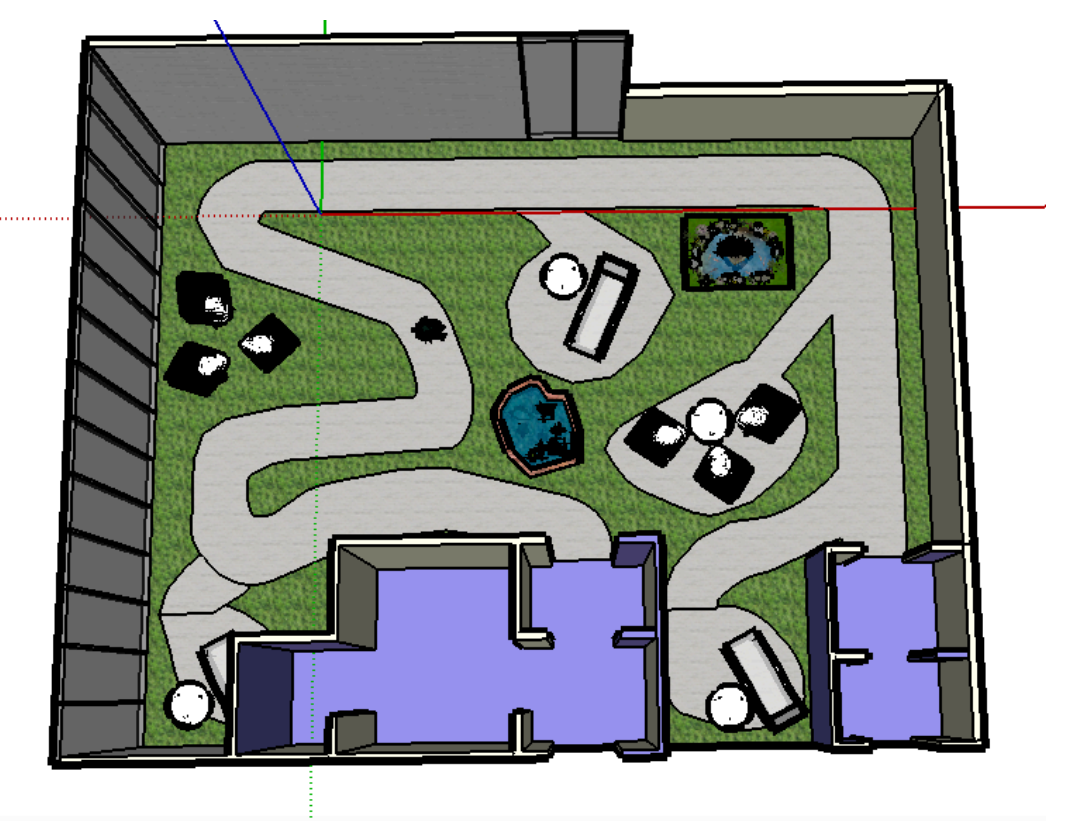
3D Model Progress



Beginning of Making the 3D Model

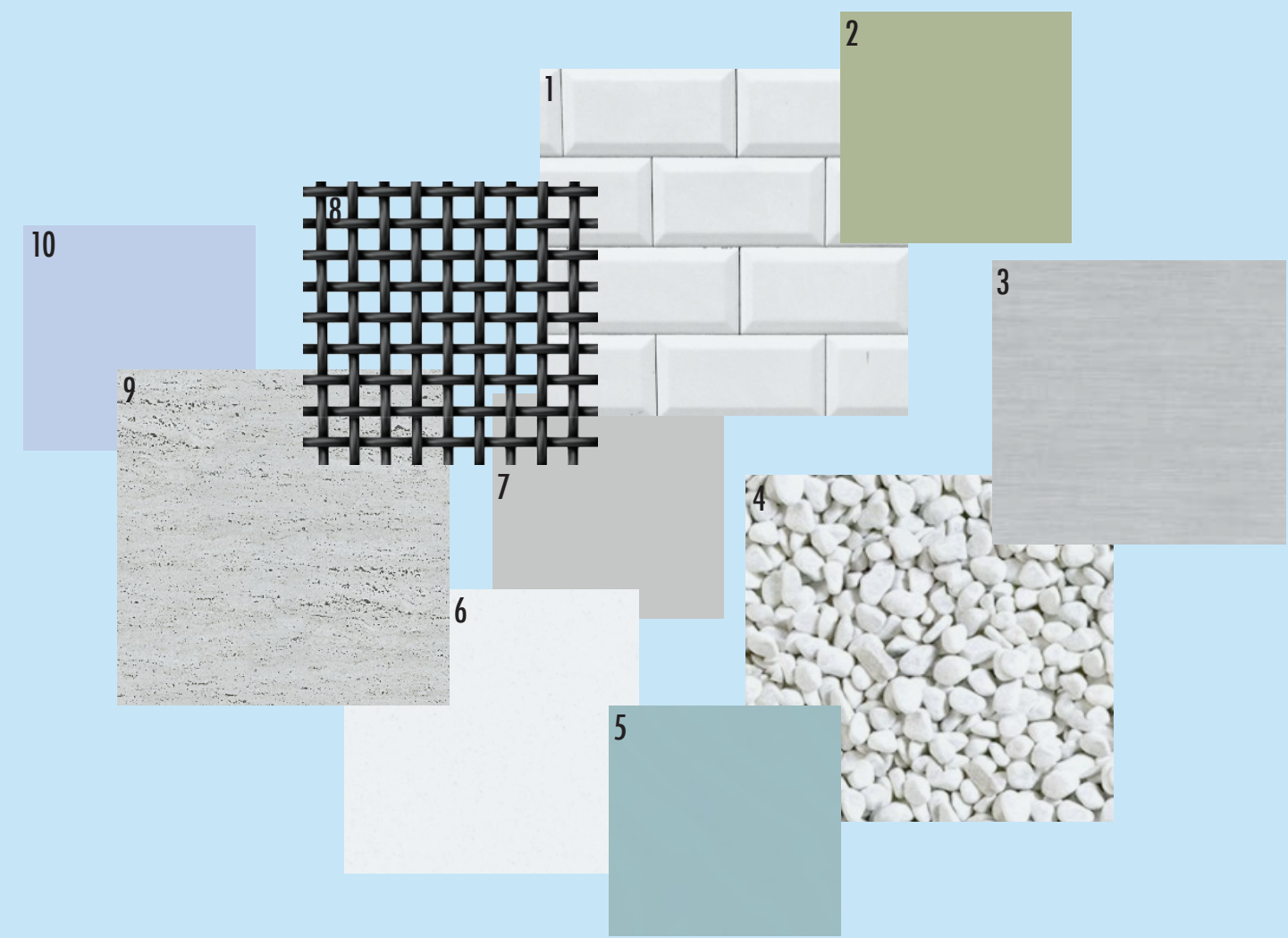


Midpoint of 3D Model



3D Model Prior to Adding Plants and Remaining Furniture

Material Selections



Material Selections Collage

- 1: White Subway Tile
- 2: Green Transparent Glass
- 3: Steel
- 4: White Pebbles
- 5: Turquoise Glass
- 6: White Synthetic Material
- 7: Grey Transparent Glass
- 8: Black Mesh
- 9: Travertine
- 10: Blue Glass

The materials I chose for the butterfly sanctuary are very neutral, the main color throughout the interior is white. I did this to ensure that the plants as well as the butterflies stand out themselves since they are the main attraction. I also chose to use mostly neutral colors because these are calming colors. I thought if I included all of the colorful plants and butterflies with colorful material selections, it would be too distracting. This distraction would make it harder for users to focus on why they are actually at the butterfly sanctuary, which is to meditate.

Plan Rendering



Rendered Plan of The Butterfly Sanctuary

Furniture Selections



Knoll: Bertoia Diamond Chair

Knoll: Bertoia Asymmetrical Chaise Lounge

Knoll: Cyclone Side Table

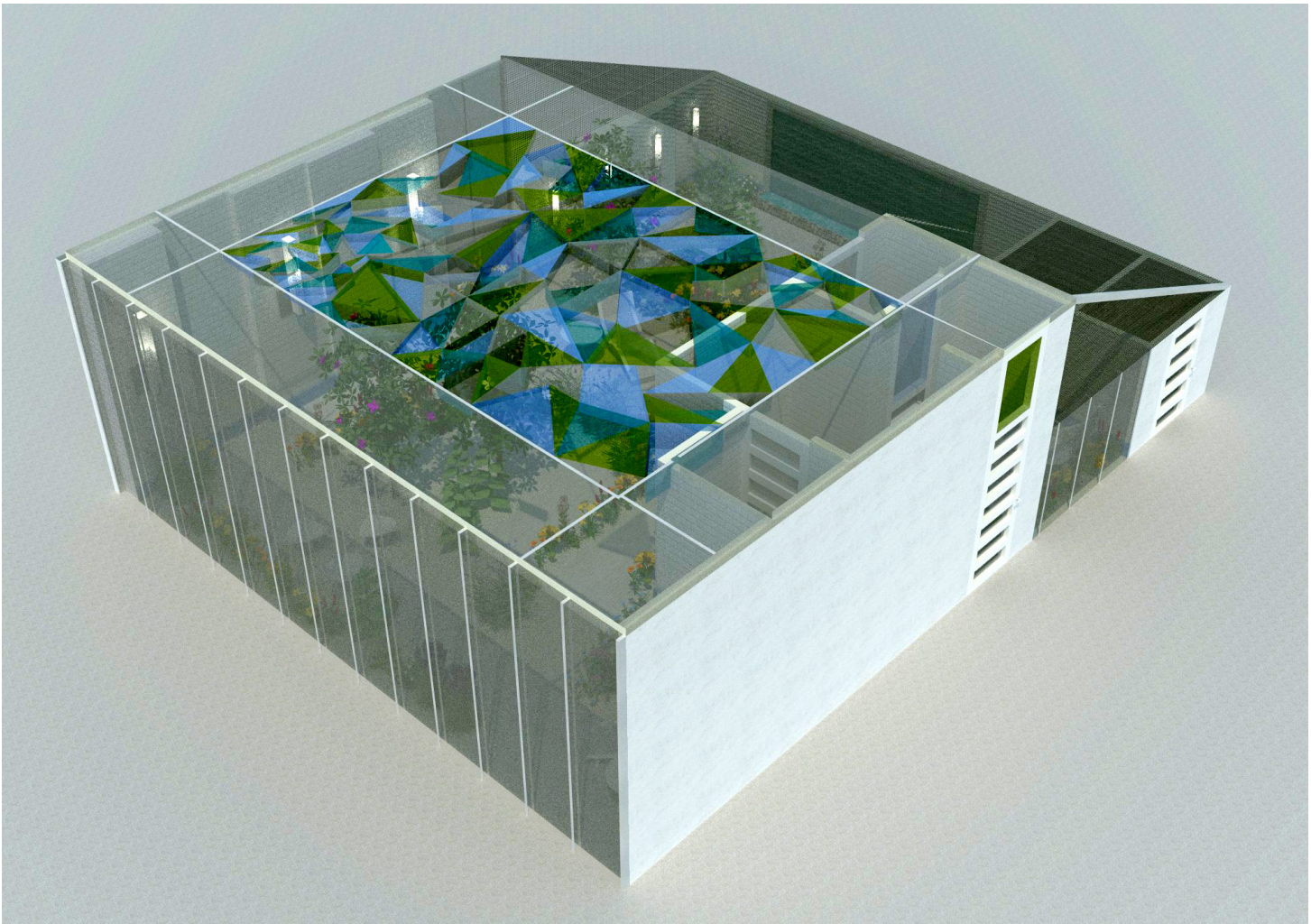
Renderings



Interior Rendering Showing the Exit, Seating Area, and Entrance (From Right to Left)



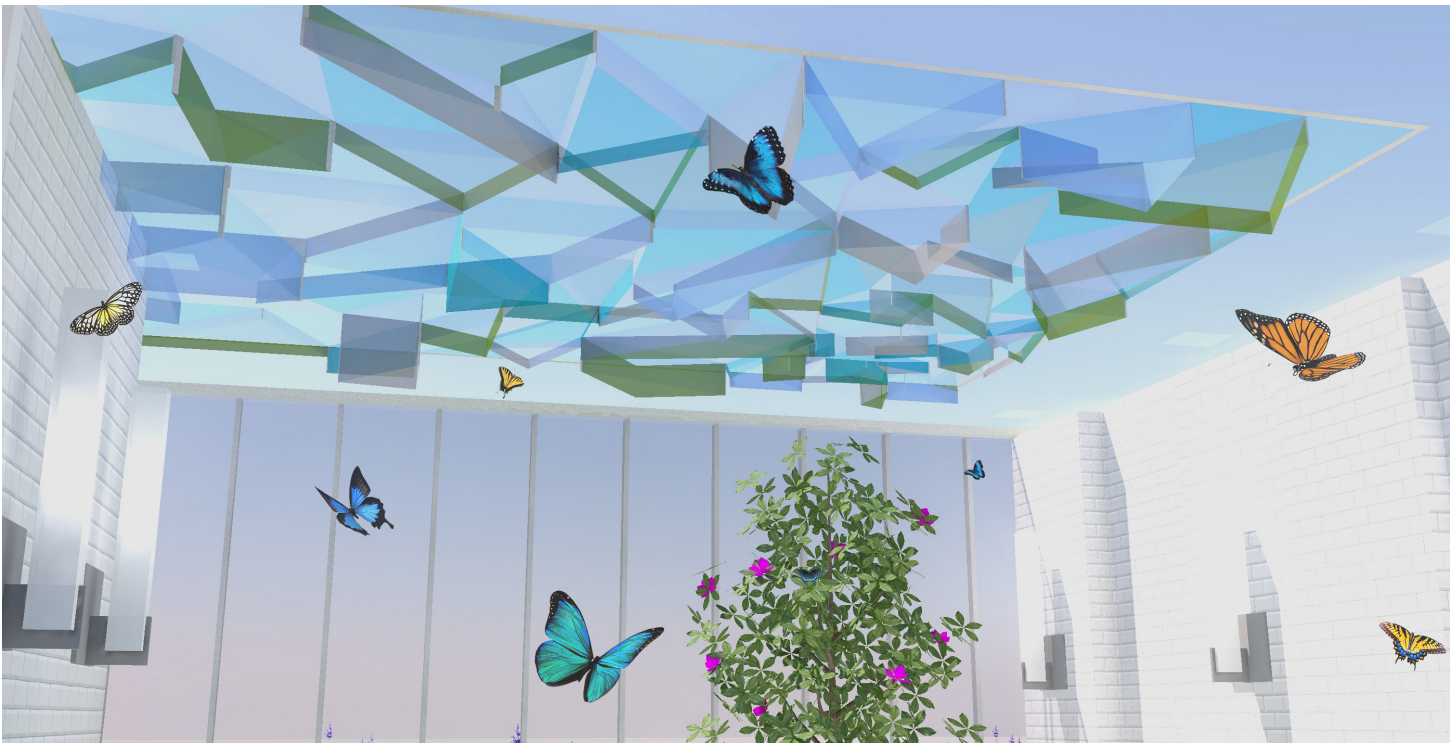
Interior Rendering Featuring the Walking Path



Exterior Rendering Featuring the Glass Ceiling



Exterior Rendering



Interior Rendering Featuring the Glass Ceiling



Interior Rendering Featuring a Seating Area in the Front with a Private Area in the Back